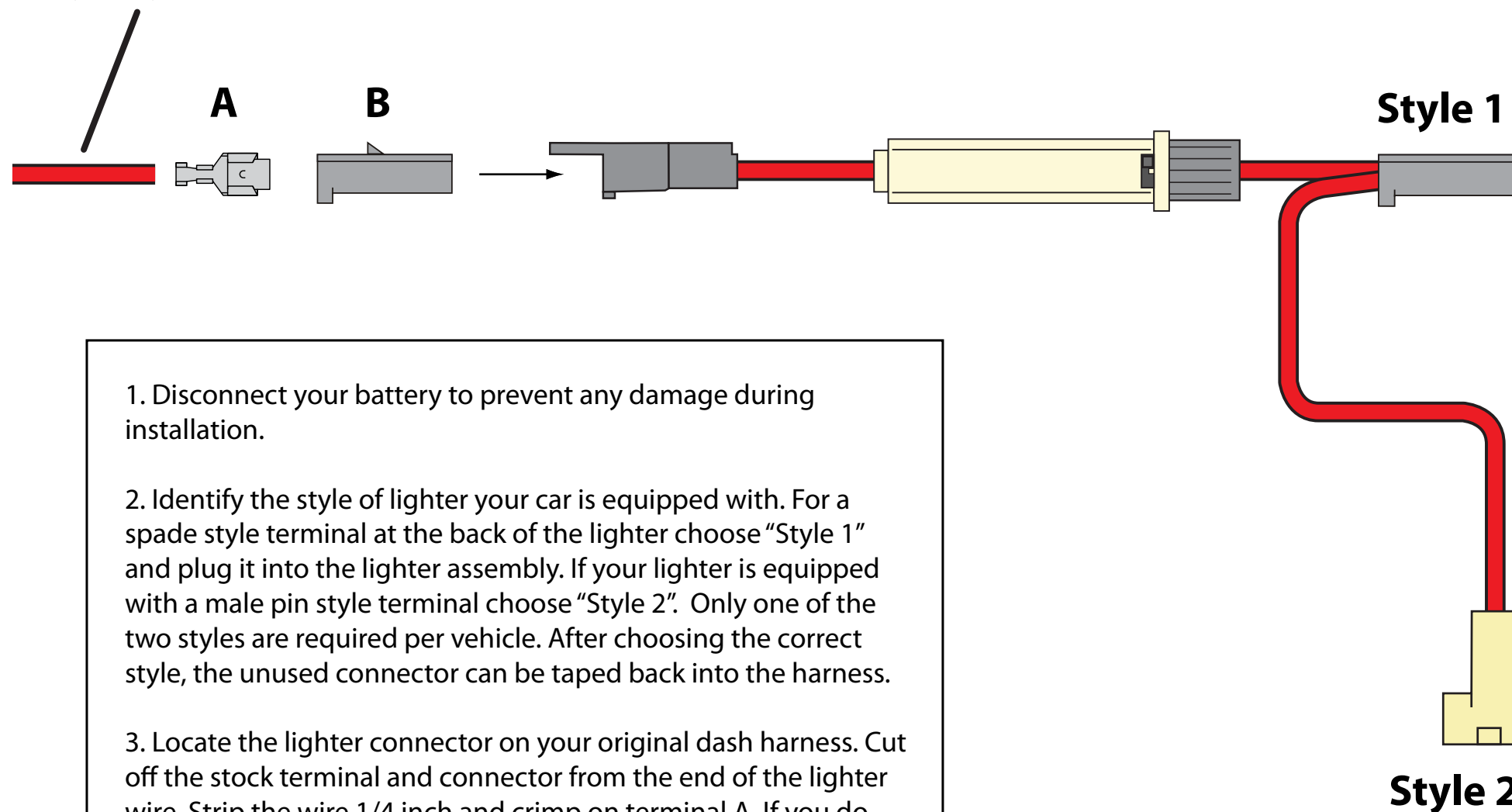
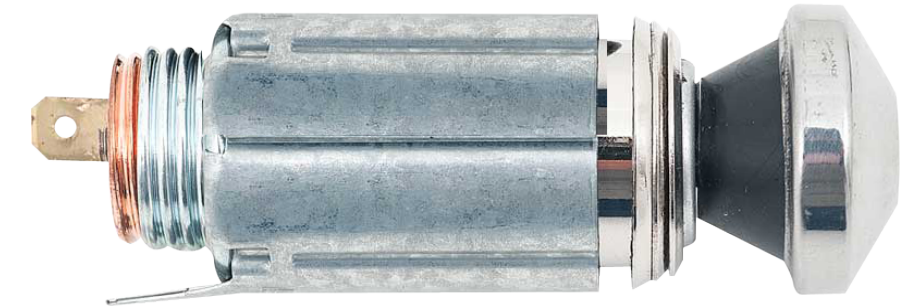


Existing wire in
stock dash harness
(typically red)



Spade Terminal Lighter Assembly



Pin Terminal Lighter Assembly



1. Disconnect your battery to prevent any damage during installation.

2. Identify the style of lighter your car is equipped with. For a spade style terminal at the back of the lighter choose "Style 1" and plug it into the lighter assembly. If your lighter is equipped with a male pin style terminal choose "Style 2". Only one of the two styles are required per vehicle. After choosing the correct style, the unused connector can be taped back into the harness.

3. Locate the lighter connector on your original dash harness. Cut off the stock terminal and connector from the end of the lighter wire. Strip the wire 1/4 inch and crimp on terminal A. If you do not have the proper GM F style crimpers, you will have to solder this terminal to the wire. *We offer the proper crimpers to make this connection (part number 510585).* Install the newly crimped terminal into connector B and plug it into the mating connector on the Lighter Jumper Harness as shown above.

4. Reconnect your battery and verify that your lighter functions properly.

Please call our Tech team with any questions you may have before, during or after your installation. 1-800-482-9473



**American
Autowire**

1-800-482-9473 www.americanautowire.com

PART # **510499**

DESCRIPTION:

**Fused Cigarette Lighter
Jumper Harness**

92972393 INSTRUCTION SHEET REV 0.0 4/29/2019