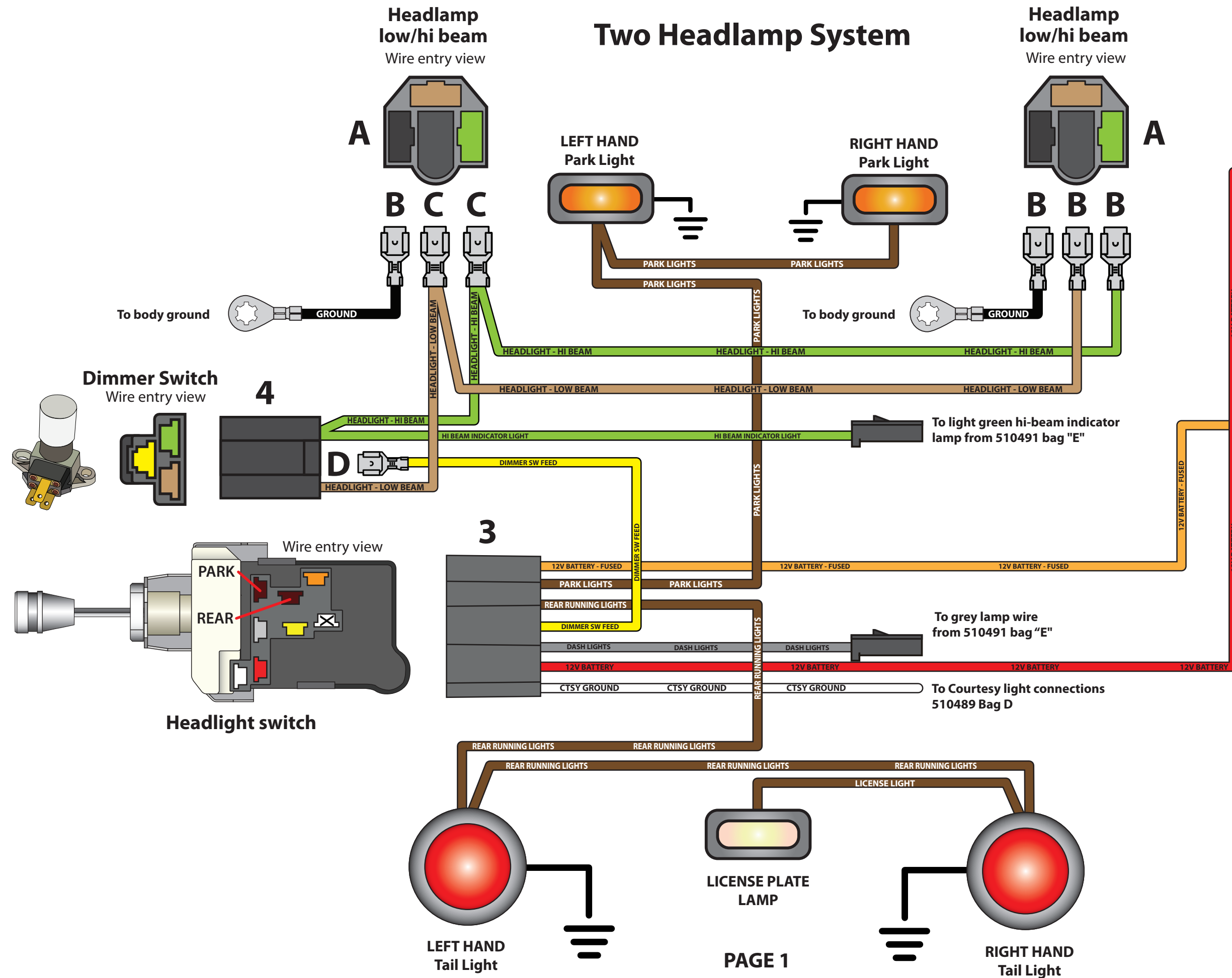


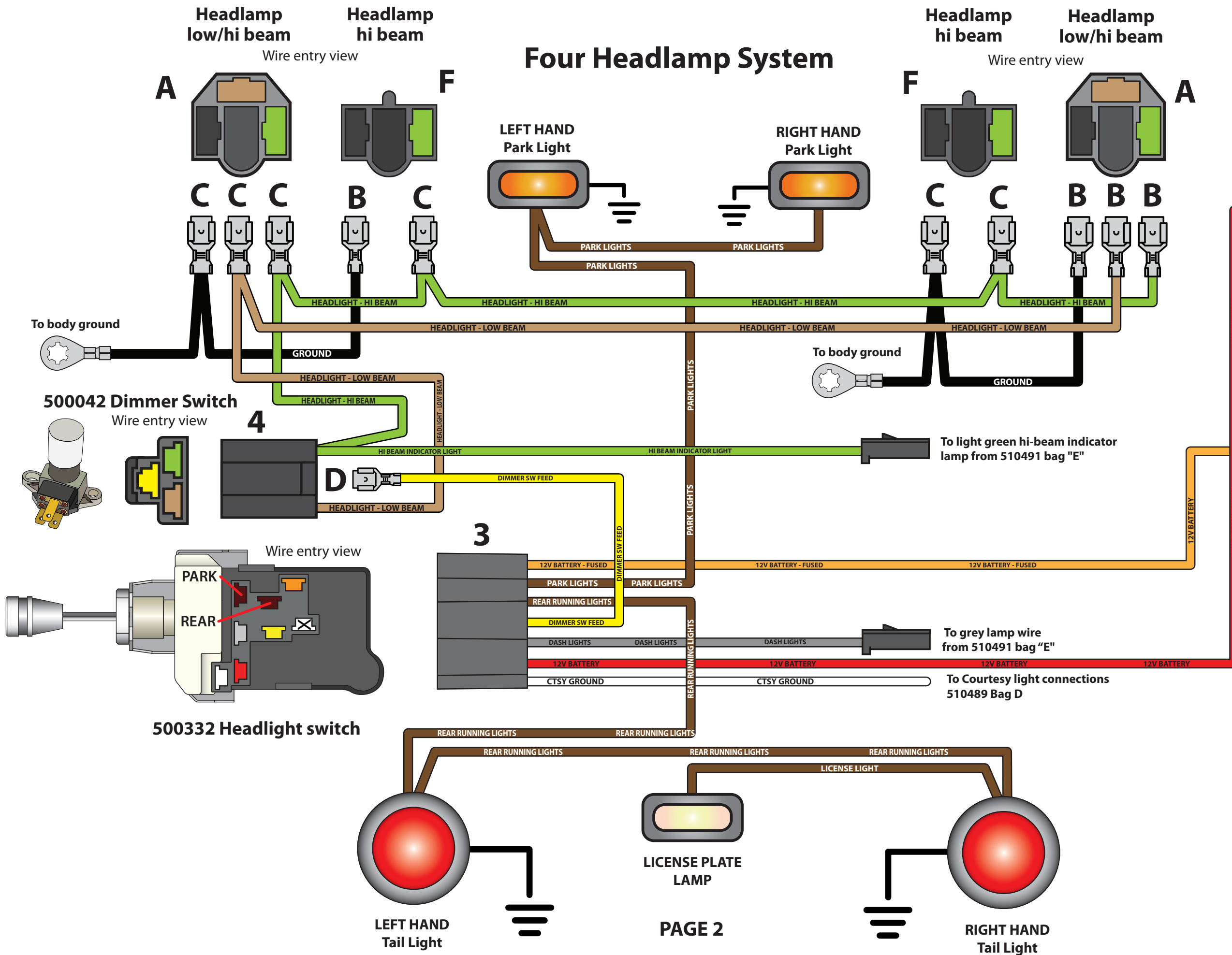
# Two Headlamp System



1	RELAY 1 OUT
2	RELAY 1 GRD
3	DOME
4	STOP
5	HEADLIGHTS
6	IGNITION 1
7	IGNITION 2
8	BATTERY 1
9	BATTERY 2
10	RADIO
11	GAUGES
12	ACCESSORY 1
13	PARK
14	WIPER
15	HEAT/AC
16	HORN OUT
17	HORN SWITCH
18	RELAY 2 OUT
19	RELAY 2 POS
20	RELAY 2 GRD
21	HAZARD
22	TURN

bag **C**  
**Headlight switch Connection Kit 510490**  
92972350 instruction rev 0.0 03/25/2019 CAD

# Four Headlamp System



1	RELAY 1 OUT
2	RELAY 1 GRD
3	DOME
4	STOP
5	HEADLIGHTS
6	IGNITION 1
7	IGNITION 2
8	BATTERY 1
9	BATTERY 2
10	RADIO
11	GAUGES
12	ACCESSORY 1
13	PARK
14	WIPER
15	HEAT/AC
16	HORN OUT
17	HORN SWITCH
18	RELAY 2 OUT
19	RELAY 2 POS
20	RELAY 2 GRD
21	HAZARD
22	TURN



**INSTALLATION INSTRUCTIONS:**

**WIRE COLOR**

**CIRCUIT**

**INSTALLATION**

**HEADLIGHT SWITCH CONNECTOR #3**

Plug this connector into the headlight switch

WHITE

CTSY GROUND

This is the ground wire for the interior lighting. This wire becomes grounded when the supplied headlight switch is turned counter clockwise by the knob until it reaches the end of its travel. The headlight switch body must be grounded for this to operate. **See examples of interior lighting connections in 510489 BAG D**

BROWN

PARK LIGHTS

Route the brown park light wire from the headlight switch connector #3 to one of the front parking lights. Cut this wire to length. Double this wire with the cut off portion and connect to the parking light. Route this cut off wire to the other parking light and connect to it. Universal light socket button terminals "E" are provided for those light sockets using this type of contact terminal. **See "DETAIL A" at the bottom of this page**

BROWN

REAR RUNNING LIGHTS

Route the brown rear running lights wire from the headlight switch connector #3 to one of the rear tail lights. Cut this wire to length. Double this wire with the cut off portion and connect to the rear tail light. Route this cut off wire to the other tail light. Do not connect to that light yet as you will be doubling this wire with the license lamp wire below. Universal light socket button terminals "E" are provided for those light sockets using this type of contact terminal. **See "DETAIL A" at the bottom of this page**

RED

12V BATTERY

Route the red wire to the fuse panel and install in the "HEADLIGHTS" location.

YELLOW

DIMMER SW FEED

Route the yellow wire to the dimmer switch connector #4. Cut to length, crimp terminal "D" onto the yellow wire and plug into location shown on page 1

ORANGE

12V BATTERY FUSED

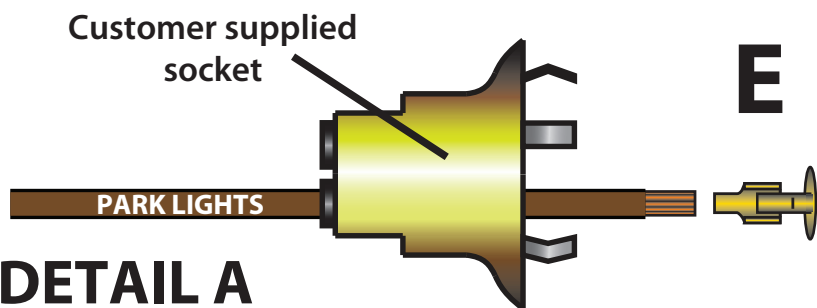
Route the orange wire to the fuse panel and install in the "PARK " location.

GRAY

DASH LIGHTS

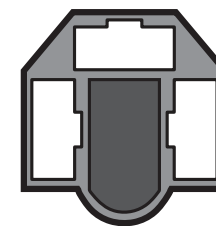
Connect the gray wire to the instrument lamps, as shown in 510491 kit, bag E.

**Written instructions continued on page 4**



**DETAIL A**

1. Pass wire through socket
2. Verify wire is in the low filament location
3. Crimp terminal to wire
4. Pull to seat terminal in socket



**A**



**B**



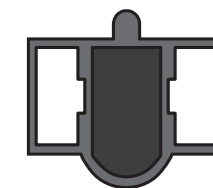
**C**



**D**



**E**



**F**



AMERICAN AUTO WIRE

## INSTALLATION INSTRUCTIONS:

### WIRE COLOR

### CIRCUIT

### INSTALLATION

#### DIMMER SWITCH CONNECTOR #4

LT GREEN	HEADLIGHT - HI BEAM (HEAVY GAUGE)	Plug this connector into the dimmer switch  Route the thicker light green wire from the dimmer switch to one headlight. Cut this wire to length. Double this wire with the cut off portion using terminal "C" and plug into the headlight connector "A" in the location shown on page 1. Route the cut off wire to the other headlight, install terminal "B" and plug into the other headlight connector "A" as shown on page 1.
LT GREEN	HI BEAM INDICATOR LIGHT (THIN GAUGE)	Connect the thinner light green wire to the high beam indicator lamp connection from kit 510491, bag "E".
TAN	HEADLIGHT - LOW BEAM	Route the tan wire from the dimmer switch to one headlight. Cut this wire to length. Double this wire with the cut off portion using terminal "C" and plug into the headlight connector "A" in the location shown on page 1. Route the cut off wire to the other headlight, install terminal "B" and plug into the other headlight connector "A" as shown on page 1.
<b>LOOSE WIRES</b>		
BROWN	LICENSE PLATE LIGHT	Double the brown license plate light wire with the brown rear running lamp wire from page 3 at the rear tail light connection and connect to that tail light. Route the other end of this wire to the license plate light connection.
BLACK	GROUND	Using the supplied single headlight connector terminal "B", install one end of the wire into the headlight "A" connector in the location shown on page 1. Install one of the supplied ring terminals to the other end and connect to a good chassis ground. Repeat the same connection for the other headlight.

## Suggested Items



### 510587 - Wire Crimpers

The single crimper is used for wire sizes ranging from 14 to 20 gauge, and the double crimper is used for sizes from 10 to 18 gauge, or terminals receiving a two wire connection.



### 500403 - Headlight Enhancement Relay Kit

Allows connection of higher demand headlights such as Halogen or LED. Sends direct battery power to bulbs and takes the load off of the headlight switch.



### 500350 - 12" 500656 - 18" Ground Straps

Medium duty ground straps are 100% tinned copper. Both sizes have a 3/8" hole on both ends.



HEADWAY 2 PLUS