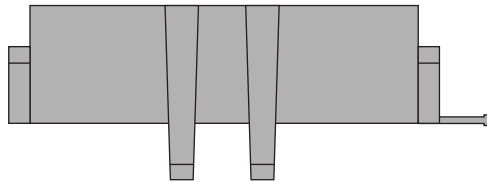
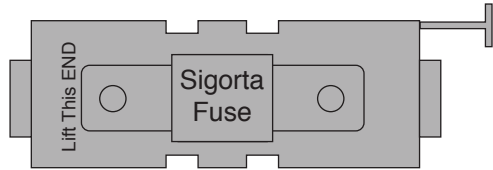
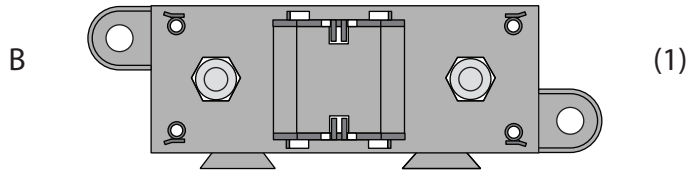
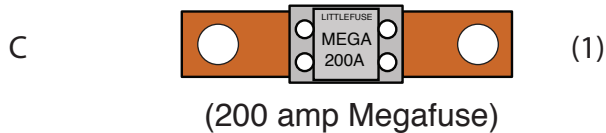


A  (1)  
 (144.0" 6 Gauge charge wire)



(Megafuse body, cover and two M8 x 1.25 nuts / lock washers)



1. On this page, you will find the wire, fuse body, fuse, boot, ring terminals, and shrink tubing (items A through J) that are necessary to connect your alternator to your wiring kit. Please be sure that all of the necessary components are present before starting this portion of your installation. If anything is missing, stop what you are doing and contact AAW at the number listed below right away.

2. On page 2, you will find directions for the Megafuse assembly (items B and C).

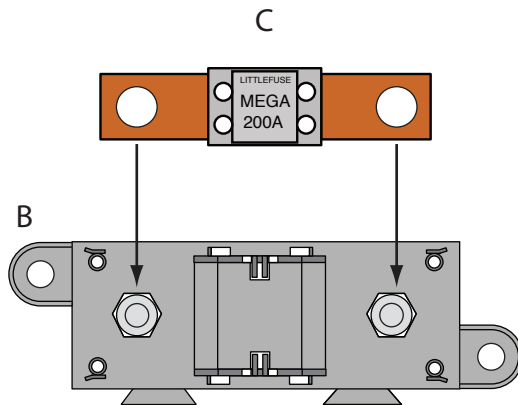
3. On page 3, you will find an overall concept of how to connect the Megafuse assembly to the starter solenoid and alternator of your wiring system.

4. On page 4, you will find tips on building your charging circuit wires and assembling them to the Megafuse assembly.



www.americanautowire.com 856-933-0801

PART #	<b>510475</b>	<b>Z</b>
DESCRIPTION:		
6Ga. High Amp Alternator Connection Kit Various Applications		
92972151 instruction sheet rev 0.0 1/19/2018		



## Assembling the Megafuse assembly

**NOTE:** Find a suitable place, as close to the battery power source as possible, under the hood of your vehicle to mount the completed Megafuse assembly. Keep in mind that you have 12 feet of 6Ga. charging wire to be able to reach the assembly.

1. Take the Megafuse body and remove the 2 nuts and lock washers from the two studs..
2. Snap the 200amp fuse (item C) onto the studs of the Megafuse body (items B) then loosely re-attach the 2 nuts and lock washers back onto the assembled Megafuse. The Megafuse assembly is ready to install into your vehicle.

PART #

**510475**

**Z**

DESCRIPTION:

**6Ga. High Amp Alternator**

**Connection Kit**

**Various Applications**

92972151 instruction sheet rev 0.0 1/19/2018



## **Building the 6Ga. charge wires and connecting them to the Megafuse assemblies:**

**NOTE:** Make sure that your battery is disconnected! You will need to install the preassembled Megafuse from page 2 in your vehicle to start this part of the installation.

1. Pre-cut item F shrink tubing into (6) 1.00" - 1.25" pieces.
2. Take the 12-foot piece of 6Ga. red wire from this kit and route it from your starter (or other battery feed) over to the area where you have mounted your Megafuse and cut it to length. Strip the insulation on each end back 1/2". Install 2 pieces of shrink tubing F onto the wire. At the starter end, crimp and solder (1) of terminal G onto the wire. At the Megafuse end, crimp and solder (1) of terminal H onto the wire. Slide the shrink tubing over the terminals and heat it to shrink it down.
3. Take the remaining portion of the 12-foot piece of 6Ga. red wire from this kit and route it from your alternator over to the area where you have mounted your Megafuse and cut it to length. Strip the insulation on each end back 1/2". Install 1 piece of shrink tubing F onto the wire. At the alternator end, slip on boot E as shown on page 3, then crimp and solder (1) of terminal J onto the wire. At the Megafuse end, crimp and solder (1) of terminal H onto the wire. Slide the shrink tubing over terminal H and heat it to shrink it down.
4. Remove the 2 loosely tightened nuts and lock washers from the assembled Megafuse, then using the drawing on page 3 as a guide, install your pre-assembled wires from steps 2 and 3 above. Re-install the 2 nuts and lock washers onto the assembled Megafuse and tighten them down. This part of your installation is now complete.

**510475**

**Z**

DESCRIPTION:

**6Ga. High Amp Alternator  
Connection Kit  
Various Applications**

92972151 instruction sheet rev 0.0 1/19/2018