

Align this template along the factory opening. You will need to remove a very small amount of material from the left hand and bottom edges of the stock bulkhead opening. This can be done with a good, sharp file, or a dremel tool.

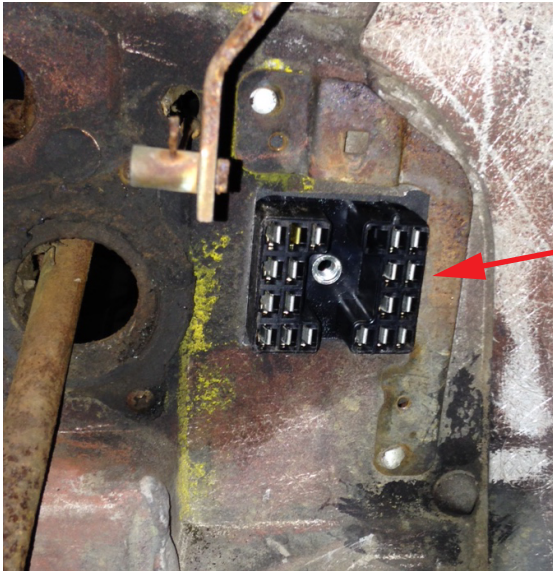
Drill new mounting hole with a 0.125 bit

remove this gray area

Viewed from engine compartment

bulkhead connector, viewed from engine compartment

Drill new mounting hole with a 0.125 bit



Firewall modification template for the 1963 - 1967 Corvette Classic Update Kit

This Classic Update Series kit uses a later style GM bulkhead assembly which has a different mounting footprint than the original bulkhead connector for your car. Therefore, it will be necessary to modify your firewall to accept this later design bulkhead. This enclosed template must be used for this purpose.

The gray area should be cut out with a razor knife to define the area of material that needs to be removed from the existing bulkhead area. We suggest that this template be glued to a stiff piece of cardboard or thin piece of plastic, or be applied directly to the cleaned firewall on the **engine compartment** side of the car, then proceed as follows:

1. Position the template against the firewall aligning the top and right hand edges with the top and right hand edges of the existing bulkhead opening in the firewall.
2. Trace the new bulkhead opening area onto the existing firewall and cut out the area that needs to be removed. It may be necessary the do some fine tuning on the hole size for an exact fit.
3. Drill two new 0.125 holes as shown above. Using the 2 new bulkhead mounting washers and screws provided in the dash loose piece kit, attach the new bulkhead into the firewall taking note to keep the indexing nub on the bulkhead connector up and to the left (from the inside of the car).

**PRINT ON ADHESIVE
LABEL SHEET**

92971437

Firewall Template instructions
Rev 0.0 11/29/2016

PRINTING INSTRUCTIONS: **DO NOT FIT TO PAGE OR SCALE**