

## Installation Directions

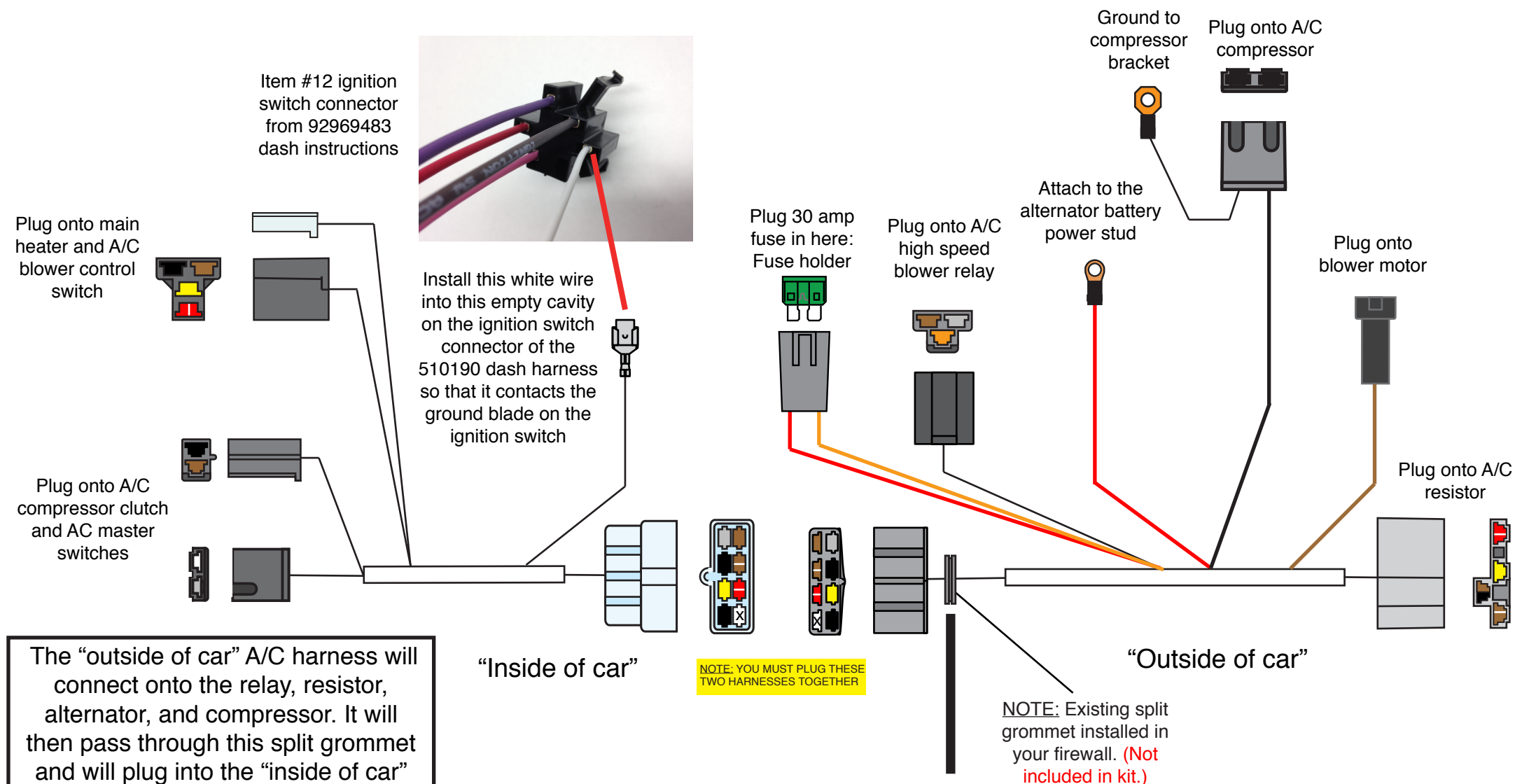
**NOTE: Disconnect your battery prior to doing this installation!**

### OUTSIDE OF CAR:

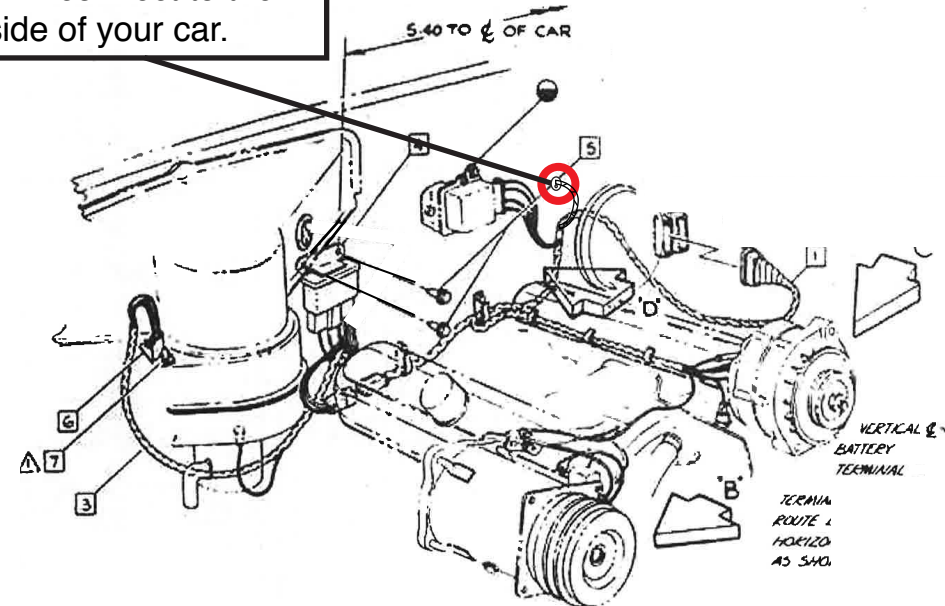
1. In the engine compartment, install the female 8-way plug from the "outside of car" portion of the new harness in through the split grommet in the driver side of the firewall. This will plug it into the 8-way male plug on the "inside the car" portion of the new harness in step number 8 below.
2. Route the main portion of the harness behind the engine, then route the compressor lead and red main power wire down the driver side valve cover.
3. Route the compressor lead over in front of the carb to the compressor just as it originally did. Connect the plug to your compressor, then attach the ring terminal to the compressor mounting bracket.
4. Attach the red power wire to the alternator battery power stud (do not plug the 30 amp fuse into the fuse holder yet).
5. Connect the 3-way connector containing the brown, gray and orange wires to the high-speed blower relay.
6. Connect the 4-way plug containing the doubled black and brown, red/white stripe, yellow and brown/white stripe wires to your blower resistor.
7. Plug the heavy gauge brown wire onto the blower motor.

### INSIDE OF CAR:

8. Plug the male 8-way plug from the "inside of car" portion of the new harness into the 8-way female plug from the "outside the car" portion of the new harness that was placed through the split grommet in the driver side of the firewall in step number 1 above.
9. Locate the ignition switch connector (item #12 on the 92969483 instruction set) on the 510190 dash harness, and plug the female terminal that is crimped onto the white wire of the "inside of car" portion of this new harness into the empty cavity on that ignition switch connector as shown at the right, so that it contacts the ground blade of the new ignition switch.
10. Route the harness across the dash toward the passenger side of the car and plug the 4-way plug that contains the black, brown, yellow, and red/white stripe wires and the single plug that contains the brown/white stripe wire onto the main A/C blower control switch at the control head.
11. Continue to route the harness across the dash toward the passenger side of the car and plug the 2-way A/C compressor clutch and 2-way A/C master switch connectors onto those switches.
12. Once everything is connected, you can plug the green 30-amp fuse into the fuse body, and reconnect the battery.



The "outside of car" A/C harness will connect onto the relay, resistor, alternator, and compressor. It will then pass through this split grommet and will plug into the "inside of car" harness which will connect to the switches inside of your car.



www.americanautowire.com 856-933-0801

**1964 GTO, Tempest, and Lemans**  
A/C Harness for Classic Update Kit & Factory Air

**510413**

92971309 Rev 0.0 9/14/2015