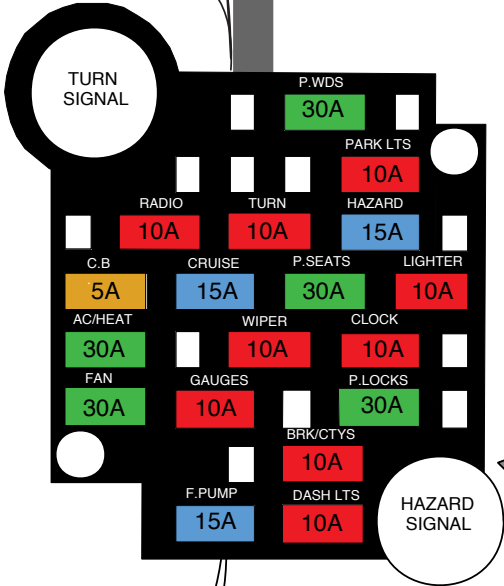


Fuse Panel Installation Instructions

Following these simple instructions will guarantee a successful installation of your American Autowire Fuse Panel Harness.
The order of installation will be as follows:

- 1. Install the fuse box and mounting plate.
- 2. Route fuse panel harness in dash area.
- 3. Make all dash connections as shown in this Fuse Panel Installation sheet.
- 4. Starting with bag "H", install all other wiring bags as per the letter designation on instruction sheets. (bags H,J,K,L,M).

Let's begin your installation of this Fuse Panel harness. Study the diagram above, and follow the installation procedures on the following pages!



Fuse panel
SEE SHEET 2

RECOMMENDED FUSE CIRCUIT RATINGS

PARK LIGHTS	10 AMP	CRUISE	15 AMP
HAZARD	15 AMP	CLOCK	10 AMP
BRAKE LIGHTS	10 AMP	LIGHTER	10 AMP
DASH LIGHTS	10 AMP	FUEL PUMP	15 AMP
TURN SIGNAL	10 AMP	POWER SEAT	30 AMP
WIPER	10 AMP	POWER LOCK	30 AMP
GAUGE	10 AMP	POWER WINDOWS	30 AMP
C.B. RADIO	5 AMP		
A/C / HEATER	30 AMP		
RADIO	10 AMP		
FAN	30 AMP		



**American
Autowire**

www.americanautowire.com 856-9233-0801

PART #

500482

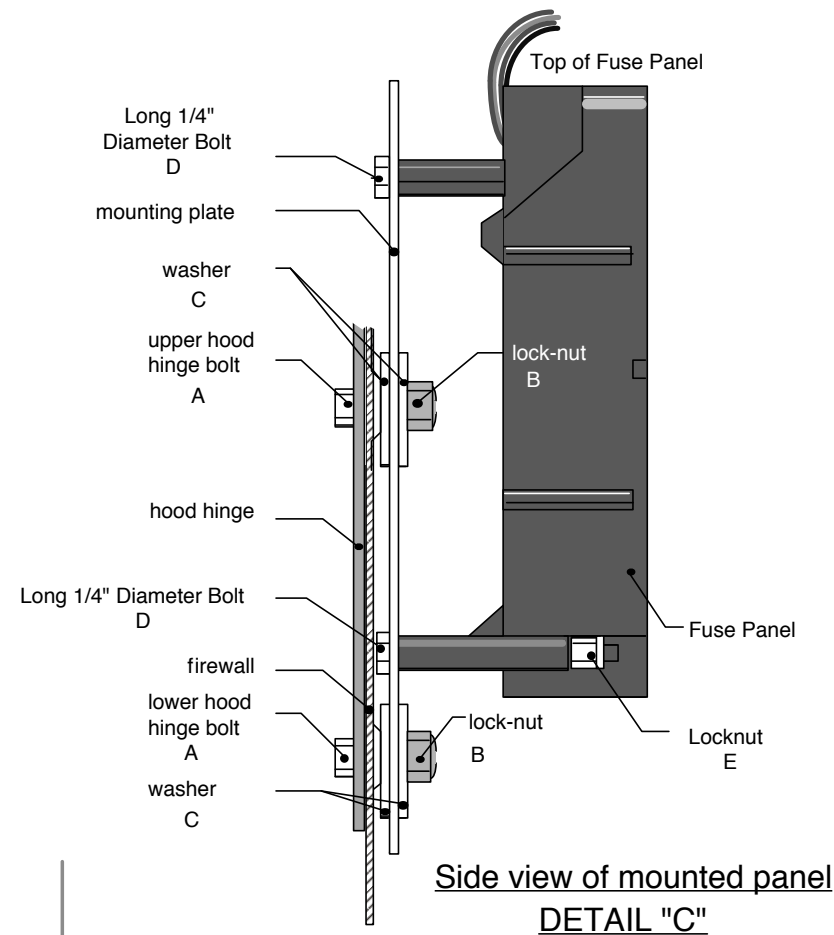
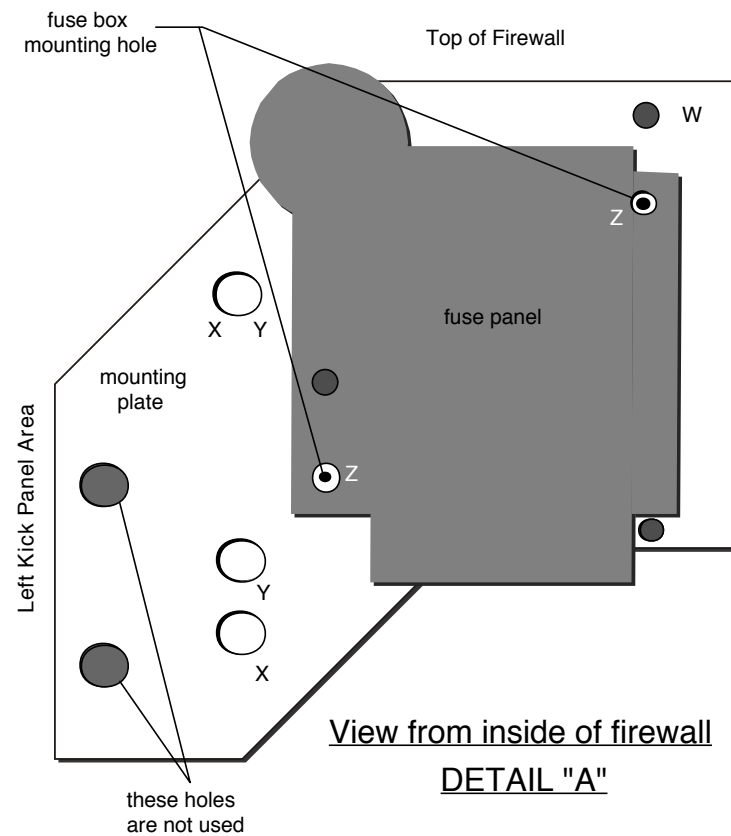
G

DESCRIPTION:

**1955-59 Chevy/GMC
Truck**

Custom Fuse Panel Harness

92965278 Rev 9.0 9/26/2019 DW

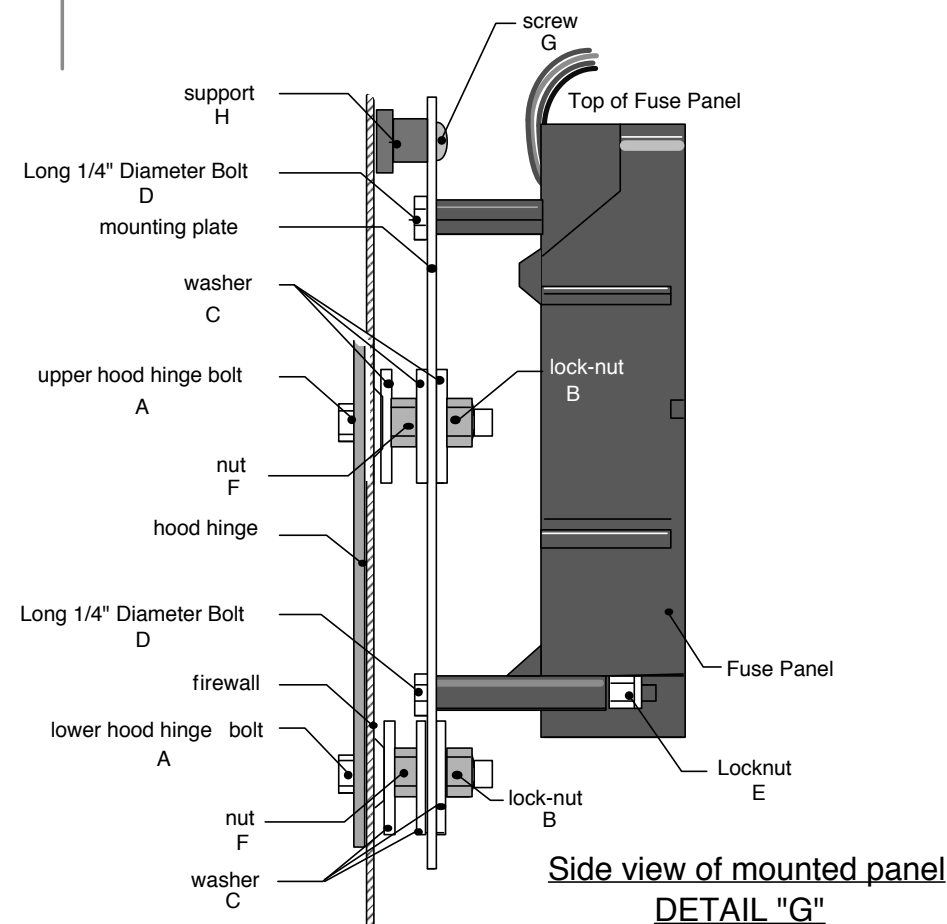
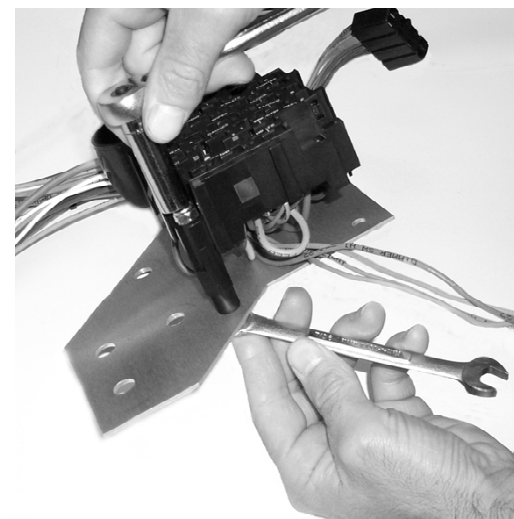
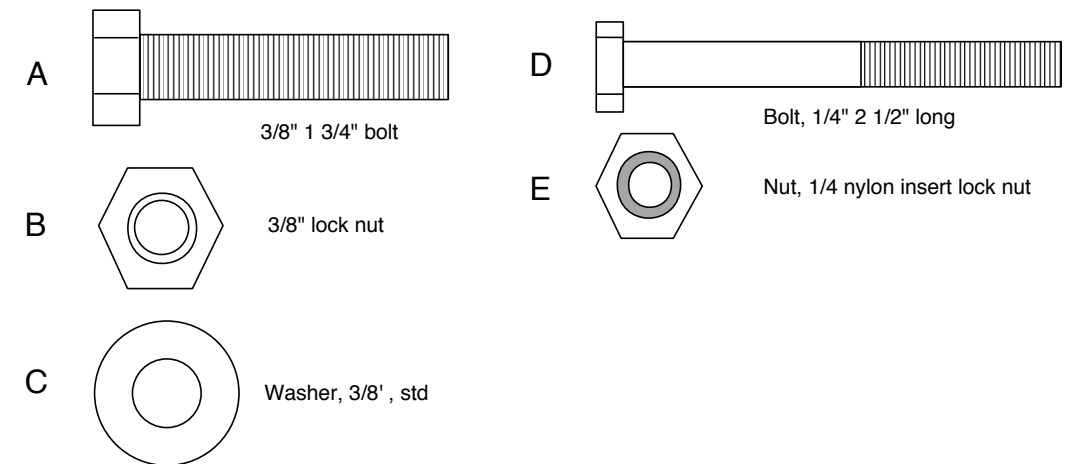


Mounting Fuse Panel and mounting plate 1955-1957 ONLY

It is recommended that the hood hinge bolts be replaced **one at a time** as follows:

1. Remove the upper driver side hood hinge bolt from the firewall.
2. Install bolt "A" into the existing hood hinge bolt hole.
3. Repeat for lower hinge bolt.
4. Insert 2 bolts "D" into holes "Z", as shown in details "A", "B", & "C".
5. Install fuse panel onto bolts "D", and secure using lock-nuts "E" (this is best to done using a 1/4" drive, 6 point deep well socket and extension). Be sure to mount fuse panel as shown in detail "A", "B", & "C", with the large bundle of wires exiting the top of the fuse panel.
6. Install washer "C" on each bolt "A".
7. Install mounting plate assembly onto bolts "A", using holes "Y".
8. Install washer "C" and lock nut "B" to complete the plate installation.

Your fuse panel is now installed!

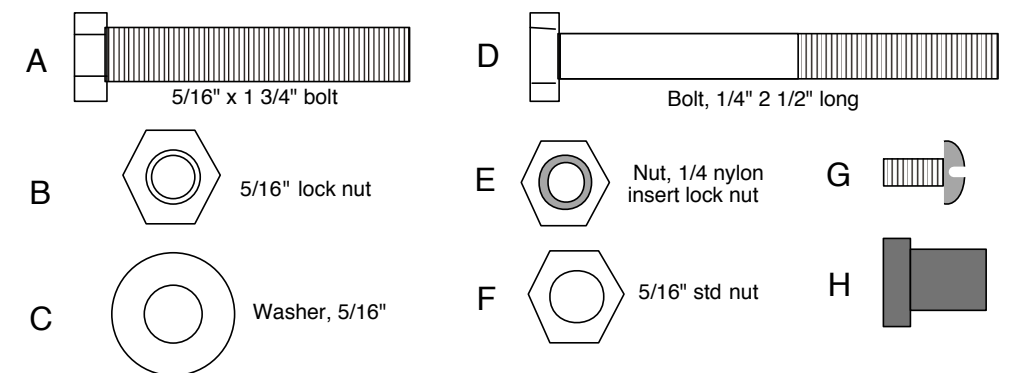


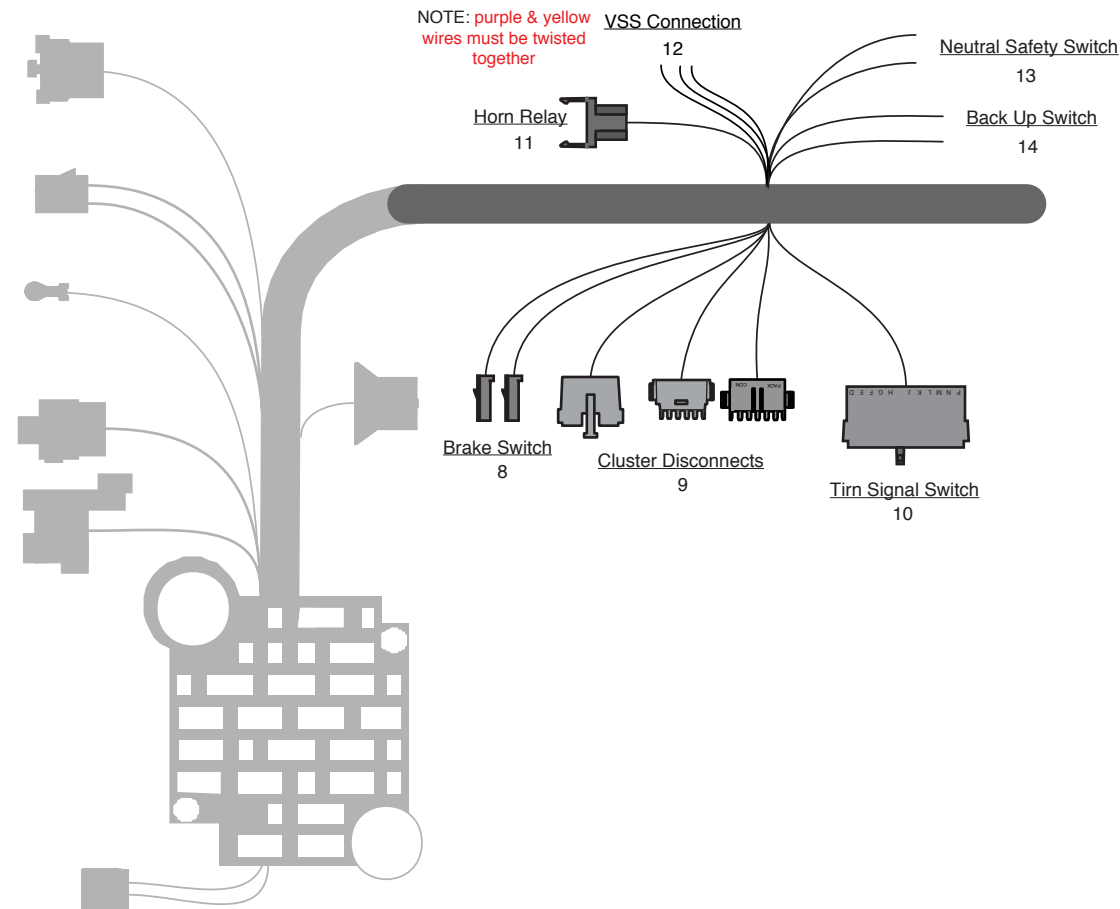
Mounting Fuse Panel and mounting plate 1958-1959 ONLY

It is recommended that the hood hinge bolts be replaced **one at a time** as follows:

1. Remove the upper driver side hood hinge bolt from the firewall.
2. Install bolt "A" into the existing hood hinge bolt hole.
3. Repeat for lower hinge bolt.
4. Insert 2 bolts "D" into holes "Z", as shown in details "A", "B", & "G".
5. Install fuse panel onto bolts "D", and secure using lock-nuts "E". (this is best to done using a 1/4" drive, 6 point deep well socket and extension). Be sure to mount fuse panel as shown in detail "A", "B", & "G", with the large bundle of wires exiting the top of the fuse panel.
6. Install screw "G" and support "H" into hole "W", as shown in detail.
7. Install washer "C" on each bolt "A".
8. Install non-locking nut "F" on bolt "A".
9. Install washer "C" on bolt "A".
10. Install mounting plate assembly onto bolts "A", using holes "X".
11. Install washer "C" and lock nut "B" to complete the plate installation.

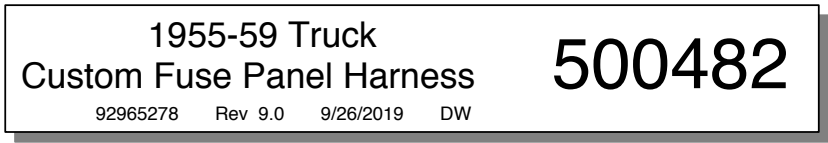
Your fuse panel is now installed!

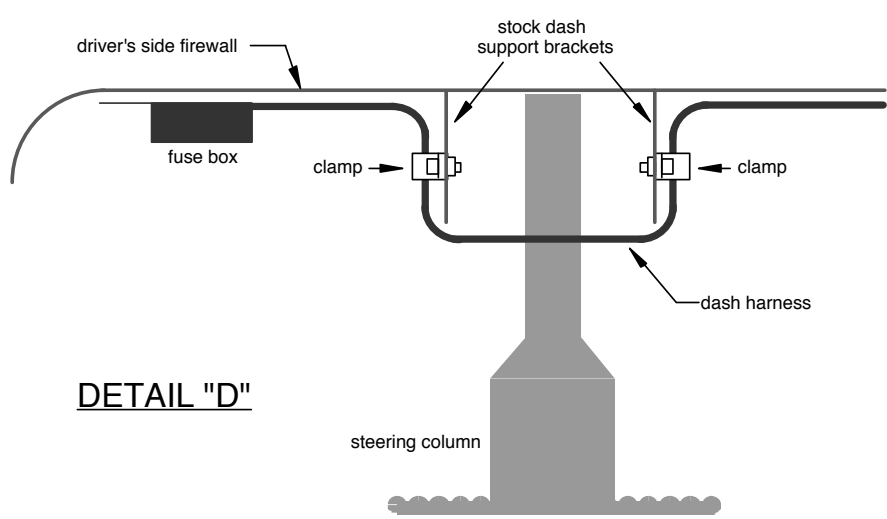




NOTE: We have set this harness up for a newer style brake switch that would mount up under the dash and use male blades. In the event that you are using a vintage style switch, we have provided orange and a white brake wire extensions that will allow you to extend the brake switch wires out to your switch. We have also included an instruction sheet (92965213) along with 2 types and terminals and connectors to help you make this connection.

8	BRAKE SWITCH	<p>NOTE: We have set this harness up for a newer style brake switch that would mount up under the dash and use male blades. In the event that you are using a vintage style switch, we have provided orange and a white brake wire extensions that will allow you to extend the brake switch wires out to your switch. We have also included an instruction sheet (92965213) along with 2 types and terminals and connectors to help you make this connection.</p> <p>Orange Fused 12 volt feed into brake switch</p> <p>White 12 volt feed out of the brake switch to the turn signal switch for brake lights.</p> <p>Lt Blue 12 volt out of the brake switch to the rear body connection for the third brake light.</p>
9	GAUGE DISCONNECT	These connectors will mate to the gauge cluster harness (510417, bag H) connectors. Wire identifications will be found in that kit.
10	TURN SIGNAL SWITCH	<p>Plug into steering column turn signal connection. If you are using a stock '55-'59 truck steering column in your truck, please refer to "Table A - AAW Turn Signal Switch wires to stock 1955-59 Chevy & GMC Truck turn signal switch" on page 4, for proper mating directions. Our connector mates to a 3 7/8 inch long plug used on 1969-1976 GM, IDIDIT, and many other aftermarket steering columns. Starting from 1977 on up, the GM switch changed and began using a 4 1/4 inch connector. That connector is from the same family and uses the same terminals. By using the supplied mating connector and terminals located in the loose piece kit bag of the dash harness (500482, bag G), it is easy to adapt any steering column to this kit. The function of the wires is as follows:</p> <p>White 12 volt feed into the turn signal switch from the brake switch for your brake lights.</p> <p>Dk. Green Feed out of the turn signal switch to the rear body connector for the RH rear turn signal.</p> <p>Yellow Feed out of the turn signal switch to the rear body connector for the LH rear turn signal.</p> <p>Purple 12 volt ignition feed into the turn signal switch for turn signals.</p> <p>Brown 12 volt battery feed into the turn signal switch for hazard lamps.</p> <p>Dk. Blue Feed out of the turn signal switch to the front light and cluster connectors for the RH front turn signal.</p> <p>Lt. Blue Feed out of the turn signal switch to the front light and cluster connectors for the RH front turn signal.</p> <p>Black Horn relay ground wire from horn switch to horn relay connector.</p>
11	HORN RELAY	<p>Plug the horn relay (found in the fuse, relay, and flasher bag, 510565) into this connector.</p> <p>Red 12 volt battery for relay.</p> <p>Black Relay ground circuit from steering column horn switch.</p> <p>Lt. Green Triggered 12 volt feed from the relay to the front lamp connector for the horns.</p>
12	VSS CONNECTIONS	<p>These wires will only be used if you are using an electronic speedometer. Route these wires out through the split grommet in the firewall with the engine and starter connections from above, and down to the VSS on your transmission. (NOTE: The purple and yellow wires must remain twisted together down to the speed sensor unit.) See the gauge cluster kit instructions, 510417 bag H, for typical connections.</p> <p>Purple VSS signal. This wire will attach to the signal wire on your VSS (twister together with the yellow wire from below).</p> <p>Yellow VSS ground. This wire will attach to the ground wire on your VSS (twister together with the purple wire from above).</p> <p>Purple/White St. 12 volt fused feed to the VSS. This wire will attach to the 12 volt wire on your VSS (only used with a 3 wire VSS).</p>
13	NEUTRAL SAFETY SW	<p>NOTE: These wires MUST be connected to either a neutral safety switch if using an automatic transmission, or connected together if using a manual transmission in order for the starter to operate, and for the truck to start.</p> <p>Purple 12 volt feed from the ignition switch to the neutral safety switch.</p> <p>Purple 12 volt feed from the neutral safety switch to the starter connection for the starter solenoid.</p>
14	BACK UP SWITCH	<p>Pink 12 volt fused feed from the fuse box to the back up lamp switch.</p> <p>Lt. Green 12 volt feed from the back up lamp switch to the rear body connector for the back up lamps.</p>





DETAIL "D"

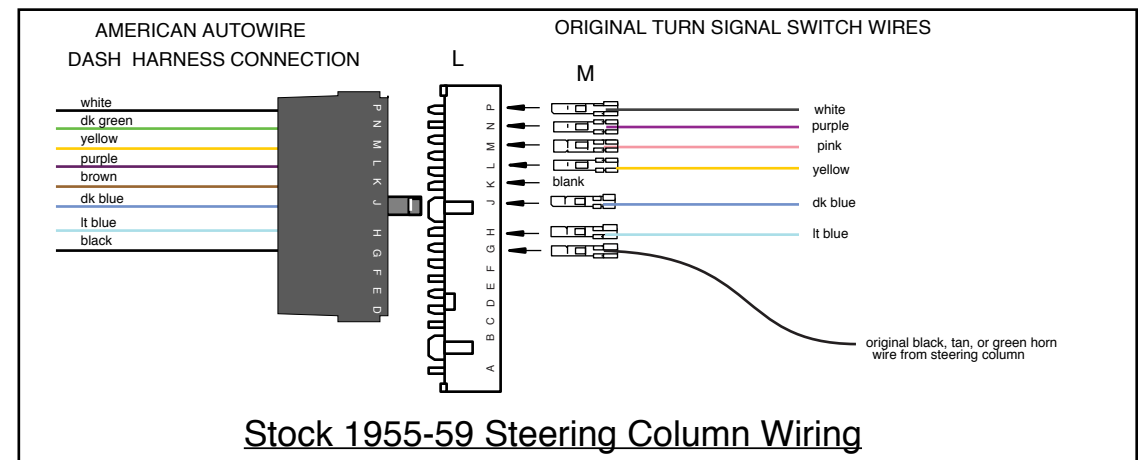
Two clamps are included for use on the dash wiring. These should be mounted as shown above, on the dash panel support brackets. Be sure that the wiring does not contact any moving parts from the wiper system.

“Table A”

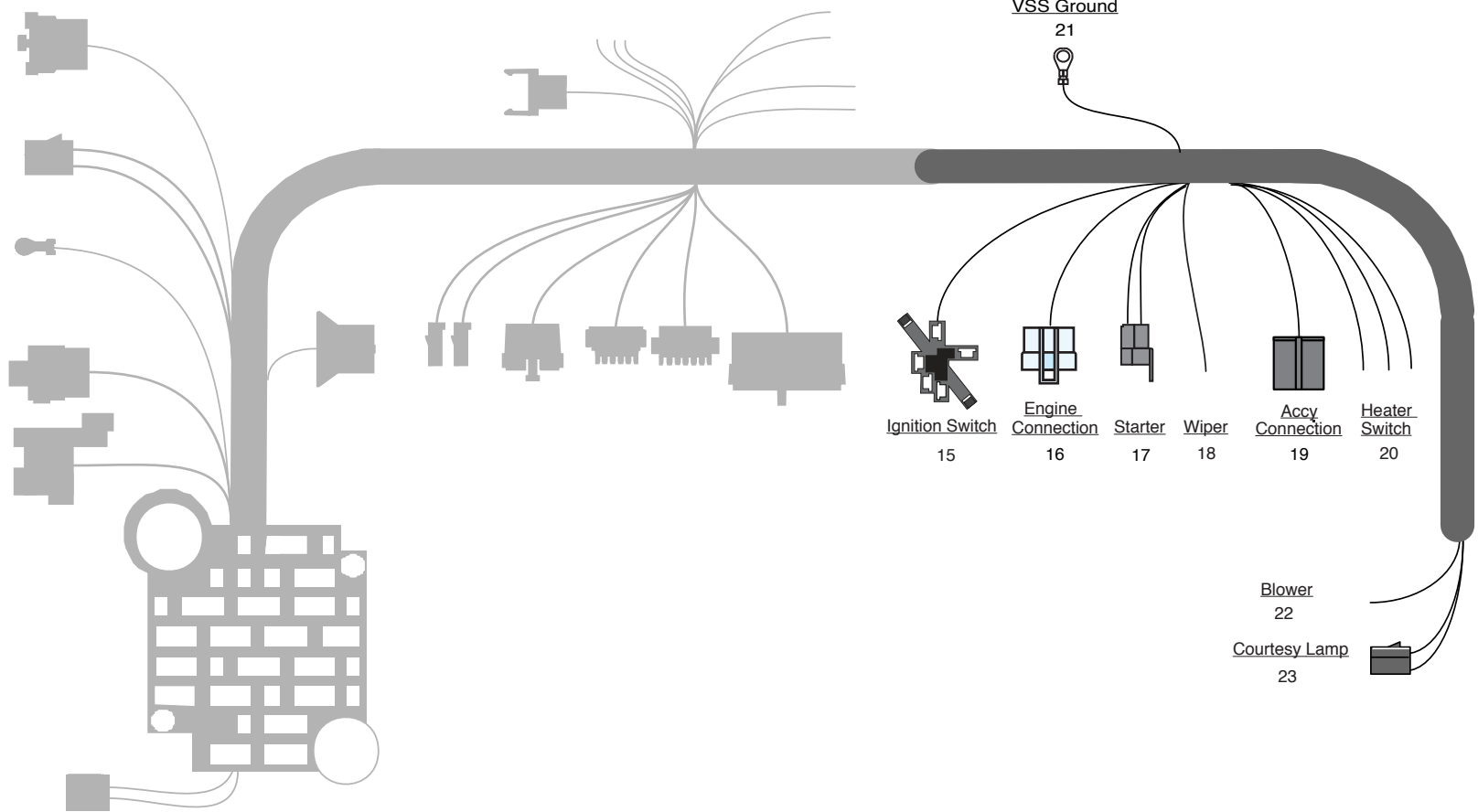
AAW Turn Signal Switch wires to stock 1955-59 Chevy & GMC Truck turn signal switch.

AAW Wire #	AAW Wire color	AAW Wire Printing	Stock Truck Wire Color
14A,B	Light Blue	Left Front Turn	Light Blue
15A,B	Dark Blue	Right Front Turn	Dark Blue
16B	Purple	Turn Switch Feed	Yellow
17A,B	White & Blue	Brake Switch	White
18	Yellow	Left Rear Turn	Pink
19	Dark Green	Right Rear Turn	Purple
27B	Brown	Turn Sw - Hazard	Not applicable
28	Black	Horn Relay Ground	Black, Tan, or Dk. Green

NOTE: The stock 1955-59 Truck turn signal switches did not have a horn ground wire located in them. That wire was a separate wire that was attached to the steering column upper mast jacket bushing and came out through an opening in the steering column. That wire was typically black, tan, or dark green and had a small male blade crimped onto it. If you are using the factory steering column in your truck, crimp one of the loose piece terminals M found in the loose piece kit of the 500482 dash harness onto that wire, and plug it into the adapter L when building your turn signal switch adapter to complete the horn ground circuit.



Stock 1955-59 Steering Column Wiring



Note: Terminals are provided for most connections on your wiring kit. Use the provided terminals and connectors to install the following wires:

15	IGNITION SWITCH	This connector will mate to the new AAW ignition switch (510632). Red 12 volt unfused battery feed into the ignition switch. Pink 12 volt unfused ignition feed out of the ignition switch to the fuse panel and engine harness connector. Brown 12 volt unfused accessory feed out of the ignition switch to the fuse panel. Purple 12 volt unfused starter solenoid feed out to the starter connection.
16	ENGINE	This connector will mate to the engine harness (510405, bag J) 6-position connector. Wire identifications will be found in that kit.
17	STARTER	This connector will mate to the engine harness (510405, bag J) 3-position connector. Wire identifications will be found in that kit.
18	WIPER FEED	White Fused 12 volt feed for windshield wipers. The dash switch will control the functions. For all aftermarket wiper systems, consult the manufacturers directions for installation.
19	ACCESSORY CONN.	NOTE: We have supplied you with a mating connector and 4 loose piece terminated wires that can be used to plug into to this connection. Below you will find a table with the wire colors, our suggested use, and how each wire is circuited (battery or accessory fused). This connector can be used for many different functions. For example, if you do not need a glove box lead, but have a need for a separate battery fused feed wire, the orange glove box wire may be used to supply power to that item. Install any needed wires into the mating connector maintaining color continuity with the dash side wires in connector #19 and then connect the loose end of the wire to your item. Red Cigarette lighter - battery fused. Yellow Radio battery 12 volt - battery fused lead for radio memory. Orange Glove box feed - battery fused. Tan Radio power - Switched "off/on" accessory fused power feed wire for radio.
20	HEATER SWITCH	Use provided connector T and terminal U (see below) to connect to an OEM style heater switch assembly for the brown and orange wires listed below. Use lamp socket V and rivet W for the OEM heater lamp. These can be found in the dash loose piece kit, 92965375. Brown 12 volt fused accessory feed to heater/A-C switch. (NOTE: This is also the "key on" power feed for any aftermarket heater or A/C system.) Orange 12 volt feed out of the switch to the blower motor. Grey Heater control lamp - fused battery.
21	ELECTRIC SPEEDO GROUND	Black/White St. This is the ground wire for the electric speedometer. Connect to a good known chassis ground (do not connect with #5 cluster ground).
22	HEATER BLOWER	Orange 12 volt feed from heater switch to blower motor (used only with stock heater switch and blower assembly).
23	RH COURTESY	This connector will mate to one of the courtesy lamp extensions (500472, bag N). Orange 12 volt feed to RH courtesy lamp. White Ground feed to RH courtesy lamp and RH door jamb switch.

